

WINTER IN THE REGION OF BELLINZONA AND VALLEYS

EN Discover a region where winter is pure fun. In the region of Bellinzona and Valleys you can experience snow all round! There are numerous ski resorts in the area where you can enjoy a wide variety of activities: from alpine skiing to splendid walks through snow-covered woods, and even fun sledging runs. Also cross-country skiing enthusiasts will find a wide offer.

AIROLO-PESCIÙM

www.airolo.ch

The Airolo-Pesciùm ski resort is located at the foot of the Gotthard massif. The slopes of the ski resort extend over more than 30 kilometres at an altitude of between 1175m and 2250m, located in a breathtaking panorama. Airolo attracts all ski enthusiasts: beginners, intermediates, experts and families.

CARI

www.cari.swiss

Thanks to its privileged and sunny location at 1650m on the southern side of the Alps, Cari is the residential tourist resort of the Media Leventina. Sun, sport and fun, an ideal combination for sportsmen and nature lovers. In winter Cari turns into an enchanting ski resort with its 20 km of slopes.

NARA

www.nara.ch

The Nara ski resort is situated in a wide, sunny valley between 1400m and 2200m above Leontica in the Blenio Valley. Nara is the ideal resort for everyone: skiers, snowboarders, children and families, from beginners to experts. It has 30 km of ski runs, 5 km of sledge runs, 2 winter trails and a Snowpark with jumps and rails of all kinds.

AIROLO-LÙINA

www.airolo-luina.ch

Lüina is a sunny paradise for children, but not only, served by a 400-metre-long platter lift, a 60-metre conveyor belt also for sledges and rubber dinghies and a children's carousel. Lüina also has a snowmaking system and facilities for night skiing.

CAMPO BLENIO

www.campoblenio.ch

After leaving Olivone and crossing the Toira tunnel, you reach the wide basin of Soprasosto where the villages of Campo Blenio and Ghirone are located. Campo Blenio-Ghirone, which has always been a welcoming and family-friendly ski resort, has new infrastructure and a large car park in the immediate vicinity of the ski lift departure point.

CIOSS PRATO

www.ciossprato.jimdofree.com

Cioss Prato is a small, family-run resort where children have the opportunity to ski under parental supervision and surrounded by the wild nature of the valley. In addition to alpine skiing, Cioss Prato offers wonderful and easy snowshoeing.

DALPE BEDRINA

www.bedrinadalpe.ch

Dalpe is a small ski resort located at 1200m and is very suitable for families. In fact, its lifts are appropriate for beginners, especially children. There is a merry-ground for the little ones, a pony lift and a treadmill.

PRATO LEVENTINA

www.sciliftprato.ch

The Prato Leventina ski resort, equipped with ski lift, pony lift and an illuminated cross-country track, is situated in a basin on the right-hand side of the valley, 3 km from the Quinto motorway exit. Next to the departure point there is a large car park and a pleasant buvette with seating.

CAMPRA

www.camppra.ch

Thanks to its 30 years of experience, the Campra centre meets the needs of all cross-country skiers, from beginners to professionals. Located in a magnificent landscape with typically Nordic characteristics, the Centre is one of the best equipped structures in the Swiss Alps for cross-country skiing.

BEDRETTO

www.scbedretto.ch

The Bedretto Valley is a mountain region with typically Alpine characteristics, so much that it is considered the little Finland of Ticino. The beautiful 8 km long cross-country ski track winds its way along the valley floor. As well as practising this discipline, the region, reachable also by public transports, is ideal for snowshoeing and is a paradise for ski mountaineering enthusiasts.



Nara

@bellinzonaevalli

 T +41 (0) 91 869 15 33

 CH-6780 Airolo

 Via della Stazione 22

 InfoPoint Leventina

 InfoPoint Bellinzona & Valli

 blenio@bellinzonaevalli.ch

 T +41 (0) 91 872 14 87

 CH-6718 Olivone

 Via Lavorenno 1

 InfoPoint Valle di Blenio

 T +41 (0) 91 862 33 27

 CH-6710 Biasca

 Via Bellinzona 5

 InfoPoint Biasca e Riviera

 bellinzona@bellinzonaevalli.ch

 T +41 (0) 91 825 21 31

 CH-6500 Bellinzona

 Piazza Collegata 12

 InfoPoint Bellinzona

 Tag us and share your experiences with #bellinzonaevalli

 SOCIAL

 LEGAL

 Data subject to changes. OTR B&T does not assume any responsibility for the data. For further constantly updated information, we kindly ask you to consult our website: bellinzonaevalli.ch

 leventina@bellinzonaevalli.ch

 T +41 (0) 91 869 15 33

 CH-6780 Airolo

 Via della Stazione 22

 InfoPoint Leventina

 InfoPoint Bellinzona & Valli

 blenio@bellinzonaevalli.ch

 T +41 (0) 91 872 14 87

 CH-6718 Olivone

 Via Lavorenno 1

 InfoPoint Valle di Blenio

 T +41 (0) 91 862 33 27

 CH-6710 Biasca

 Via Bellinzona 5

 InfoPoint Biasca e Riviera

 bellinzona@bellinzonaevalli.ch

 T +41 (0) 91 825 21 31

 CH-6500 Bellinzona

 Piazza Collegata 12

 InfoPoint Bellinzona

 Tag us and share your experiences with #bellinzonaevalli

 SOCIAL

 LEGAL

 Data subject to changes. OTR B&T does not assume any responsibility for the data. For further constantly updated information, we kindly ask you to consult our website: bellinzonaevalli.ch

 leventina@bellinzonaevalli.ch

 T +41 (0) 91 869 15 33

 CH-6780 Airolo

 Via della Stazione 22

 InfoPoint Leventina

 InfoPoint Bellinzona & Valli

 blenio@bellinzonaevalli.ch

 T +41 (0) 91 872 14 87

 CH-6718 Olivone

 Via Lavorenno 1

 InfoPoint Valle di Blenio

 T +41 (0) 91 862 33 27

 CH-6710 Biasca

 Via Bellinzona 5

 InfoPoint Biasca e Riviera

 bellinzona@bellinzonaevalli.ch

 T +41 (0) 91 825 21 31

 CH-6500 Bellinzona

 Piazza Collegata 12

 InfoPoint Bellinzona

 Tag us and share your experiences with #bellinzonaevalli

 SOCIAL

 LEGAL

 Data subject to changes. OTR B&T does not assume any responsibility for the data. For further constantly updated information, we kindly ask you to consult our website: bellinzonaevalli.ch

 leventina@bellinzonaevalli.ch

 T +41 (0) 91 869 15 33

 CH-6780 Airolo

 Via della Stazione 22

 InfoPoint Leventina

 InfoPoint Bellinzona & Valli

 blenio@bellinzonaevalli.ch

 T +41 (0) 91 872 14 87

 CH-6718 Olivone

 Via Lavorenno 1

 InfoPoint Valle di Blenio

 T +41 (0) 91 862 33 27

 CH-6710 Biasca

 Via Bellinzona 5

 InfoPoint Biasca e Riviera

 bellinzona@bellinzonaevalli.ch

 T +41 (0) 91 825 21 31

 CH-6500 Bellinzona

 Piazza Collegata 12

 InfoPoint Bellinzona

 Tag us and share your experiences with #bellinzonaevalli

 SOCIAL

 LEGAL

 Data subject to changes. OTR B&T does not assume any responsibility for the data. For further constantly updated information, we kindly ask you to consult our website: bellinzonaevalli.ch

 leventina@bellinzonaevalli.ch

 T +41 (0) 91 869 15 33

 CH-6780 Airolo

 Via della Stazione 22

 InfoPoint Leventina

 InfoPoint Bellinzona & Valli

 blenio@bellinzonaevalli.ch

 T +41 (0) 91 872 14 87

 CH-6718 Olivone

 Via Lavorenno 1

 InfoPoint Valle di Blenio

 T +41 (0) 91 862 33 27

 CH-6710 Biasca

 Via Bellinzona 5

 InfoPoint Biasca e Riviera

 bellinzona@bellinzonaevalli.ch

 T +41 (0) 91 825 21 31

 CH-6500 Bellinzona

 Piazza Collegata 12

 InfoPoint Bellinzona

 Tag us and share your experiences with #bellinzonaevalli

 SOCIAL

 LEGAL

 Data subject to changes. OTR B&T does not assume any responsibility for the data. For further constantly updated information, we kindly ask you to consult our website: bellinzonaevalli.ch

 leventina@bellinzonaevalli.ch

 T +41 (0) 91 869 15 33

 CH-6780 Airolo

 Via della Stazione 22

 InfoPoint Leventina

 InfoPoint Bellinzona & Valli

 blenio@bellinzonaevalli.ch

 T +41 (0) 91 872 14 87

 CH-6718 Olivone

 Via Lavorenno 1

 InfoPoint Valle di Blenio

 T +41 (0) 91 862 33 27

 CH-6710 Biasca

 Via Bellinzona 5

 InfoPoint Biasca e Riviera

 bellinzona@bellinzonaevalli.ch

 T +41 (0) 91 825 21 31

 CH-6500 Bellinzona

 Piazza Collegata 12

 InfoPoint Bellinzona

 Tag us and share your experiences with #bellinzonaevalli

 SOCIAL

 LEGAL

 Data subject to changes. OTR B&T does not assume any responsibility for the data. For further constantly updated information, we kindly ask you to consult our website: bellinzonaevalli.ch

 leventina@bellinzonaevalli.ch

 T +41 (0) 91 869 15 33

 CH-6780 Airolo

 Via della Stazione 22

 InfoPoint Leventina

 InfoPoint Bellinzona & Valli

 blenio@bellinzonaevalli.ch

 T +41 (0) 91 872 14 87

 CH-6718 Olivone

 Via Lavorenno 1

 InfoPoint Valle di Blenio

 T +41 (0) 91 862 33 27

 CH-6710 Biasca

 Via Bellinzona 5

 InfoPoint Biasca e Riviera

 bellinzona@bellinzonaevalli.ch

 T +41 (0) 91 825 21 31

 CH-6500 Bellinzona

 Piazza Collegata 12

 InfoPoint Bellinzona

 Tag us and share your experiences with #bellinzonaevalli

 SOCIAL

 LEGAL

 Data subject to changes. OTR B&T does not assume any responsibility for the data. For further constantly updated information, we kindly ask you to consult our website: bellinzonaevalli.ch

 leventina@bellinzonaevalli.ch

 T +41 (0) 91 869 15 33

 CH-6780 Airolo

 Via della Stazione 22

 InfoPoint Leventina

 InfoPoint Bellinzona & Valli

 blenio@bellinzonaevalli.ch

 T +41 (0) 91 872 14 87

 CH-6718 Olivone

 Via Lavorenno 1

 InfoPoint Valle di Blenio

 T +41 (0) 91 862 33 27

 CH-6710 Biasca

 Via Bellinzona 5

 InfoPoint Biasca e Riviera

 bellinzona@bellinzonaevalli.ch

 T +41 (0) 91 825 21 31

 CH-6500 Bellinzona

 Piazza Collegata 12

 InfoPoint Bellinzona

 Tag us and share your experiences with #bellinzonaevalli

 SOCIAL

 LEGAL

 Data subject to changes. OTR B&T does not assume any responsibility for the data. For further constantly updated information, we kindly ask you to consult our website: bellinzonaevalli.ch

 leventina@bellinzonaevalli.ch

 T +41 (0) 91 869 15 33

 CH-6780 Airolo

 Via della Stazione 22

 InfoPoint Leventina

 InfoPoint Bellinzona & Valli

 blenio@bellinzonaevalli.ch

 T +41 (0) 91 872 14 87

 CH-6718 Olivone

 Via Lavorenno 1

 InfoPoint Valle di Blenio

 T +41 (0) 91 862 33 27

 CH-6710 Biasca

 Via Bellinzona 5

 InfoPoint Biasca e Riviera

 bellinzona@bellinzonaevalli.ch

 T +41 (0) 91 825 21 31

 CH-6500 Bellinzona

 Piazza Collegata 12

 InfoPoint Bellinzona

 Tag us and share your experiences with #bellinzonaevalli

 SOCIAL

 LEGAL

 Data subject to changes. OTR B&T does not assume any responsibility for the data. For further constantly updated information, we kindly ask you to consult our website: bellinzonaevalli.ch

 leventina@bellinzonaevalli.ch

 T +41 (0) 91 869 15 33

 CH-6780 Airolo

 Via della Stazione 22

 InfoPoint Leventina

 InfoPoint Bellinzona & Valli

 blenio@bellinzonaevalli.ch

 T +41 (0) 91 872 14 87

 CH-6718 Olivone

 Via Lavorenno 1

 InfoPoint Valle di Blenio

 T +41 (0) 91 862 33 27

 CH-6710 Biasca

 Via Bellinzona 5

 InfoPoint Biasca e Riviera

 bellinzona@bellinzonaevalli.ch

 T +41 (0) 91 825 21 31

 CH-6500 Bellinzona

 Piazza Collegata 12

 InfoPoint Bellinzona

 Tag us and share your experiences with #bellinzonaevalli

 SOCIAL

 LEGAL

 Data subject to changes. OTR B&T does not assume any responsibility for the data. For further constantly updated information, we kindly ask you to consult our website: bellinzonaevalli.ch

 leventina@bellinzonaevalli.ch

 T +41 (0) 91 869 15 33

 CH-6780 Airolo

 Via della Stazione 22

 InfoPoint Leventina

 InfoPoint Bellinzona & Valli

 blenio@bellinzonaevalli.ch

 T +41 (0) 91 872 14 87

 CH-6718 Olivone

 Via Lavorenno 1

 InfoPoint Valle di Blenio

 T +41 (0) 91 862 33 27

 CH-6710 Biasca

 Via Bellinzona 5

 InfoPoint Biasca e Riviera

 bellinzona@bellinzonaevalli.ch

 T +41 (0) 91 825 21 31

 CH-6500 Bellinzona

 Piazza Collegata 12

 InfoPoint Bellinzona

 Tag us and share your experiences with #bellinzonaevalli

 SOCIAL

 LEGAL

 Data subject to changes. OTR B&T does not assume any responsibility for the data. For further constantly updated information, we kindly ask you to consult our website: bellinzonaevalli.ch

 leventina@bellinzonaevalli.ch

 T +41 (0) 91 869 15 33

 CH-6780 Airolo

 Via della Stazione 22

 InfoPoint Leventina

 InfoPoint Bellinzona & Valli

 blenio@bellinzonaevalli.ch

 T +41 (0) 91 872 14 87

 CH-6718 Olivone

 Via Lavorenno 1

 InfoPoint Valle di Blenio

 T +41 (0) 91 862 33 27

 CH-6710 Biasca

 Via Bellinzona 5

 InfoPoint Biasca e Riviera

 bellinzona@bellinzonaevalli.ch

 T +41 (0) 91 825 21 31

 CH-6500 Bellinzona

 Piazza Collegata 12

 InfoPoint Bellinzona

 Tag us and share your experiences with #bellinzonaevalli

 SOCIAL

 LEGAL

 Data subject to changes. OTR B&T does not assume any responsibility for the data. For further constantly updated information, we kindly ask you to consult our website: bellinzonaevalli.ch

 leventina@bellinzonaevalli.ch

 T +41 (0) 91 869 15 33

 CH-6780 Airolo

 Via della Stazione 22

 InfoPoint Leventina

 InfoPoint Bellinzona & Valli

 blenio@bellinzonaevalli.ch

 T +41 (0) 91 872 14 87

 CH-6718 Olivone

 Via Lavorenno 1

 InfoPoint Valle di Blenio

 T +41 (0) 91 862 33 27

 CH-6710 Biasca

 Via Bellinzona 5

 InfoPoint Biasca e Riviera

 bellinzona@bellinzonaevalli.ch

 T +41 (0) 91 825 21 31

 CH-6500 Bellinzona

 Piazza Collegata 12

 InfoPoint Bellinzona

 Tag us and share your experiences with #bellinzonaevalli

 SOCIAL

 LEGAL

 Data subject to changes. OTR B&T does not assume any responsibility for the data. For further constantly updated information, we kindly ask you to consult our website: bellinzonaevalli.ch

 leventina@bellinzonaevalli.ch

 T +41 (0) 91 869 15 33

 CH-6780 Airolo

 Via della Stazione 22

 InfoPoint Leventina

 InfoPoint Bellinzona & Valli

 blenio@bellinzonaevalli.ch

 T +41 (0) 91 872 14 87

 CH-6718 Olivone

 Via Lavorenno 1

 InfoPoint Valle di Blenio

 T +41 (0) 91 862 33 27

 CH-6710 Biasca

 Via Bellinzona 5

 InfoPoint Biasca e Riviera

 bellinzona@bellinzonaevalli.ch

 T +41 (0) 91 825 21 31

 CH-6500 Bellinzona

 Piazza Collegata 12

 InfoPoint Bellinzona

 Tag us and share your experiences with #bellinzonaevalli

 SOCIAL

 LEGAL

 Data subject to changes. OTR B&T does not assume any responsibility for the data. For further constantly updated information, we kindly ask you to consult our website: bellinzonaevalli.ch

 leventina@bellinzonaevalli.ch

 T +41 (0) 91 869 15 33

 CH-6780 Airolo

 Via della Stazione 22

 InfoPoint Leventina

 InfoPoint Bellinzona & Valli

 blenio@bellinzonaevalli.ch

 T +41 (0) 91 872 14 87

 CH-6718 Olivone

 Via Lavorenno 1

 InfoPoint Valle di Blenio

 T +41 (0) 91 862 33 27

 CH-6710 Biasca

 Via Bellinzona 5

 InfoPoint Biasca e Riviera

 bellinzona@bellinzonaevalli.ch

 T +41 (0) 91 825 21 31

 CH-6500 Bellinzona

 Piazza Collegata 12

 InfoPoint Bellinzona

 Tag us and share your experiences with #bellinzonaevalli

 SOCIAL

 LEGAL

 Data subject to changes. OTR B&T does not assume any responsibility for the data. For further constantly updated information, we kindly ask you to consult our website: bellinzonaevalli.ch

 leventina@bellinzonaevalli.ch

 T +41 (0) 91 869 15 33

 CH-6780 Airolo

 Via della Stazione 22

 InfoPoint Leventina

 InfoPoint Bellinzona & Valli

 blenio@bellinzonaevalli.ch

 T +41 (0) 91 872 14 87

 CH-6718 Olivone

 Via Lavorenno 1

 InfoPoint Valle di Blenio

 T +41 (0) 91 862 33 27

 CH-6710 Biasca

 Via Bellinzona 5

 InfoPoint Biasca e Riviera

 bellinzona@bellinzonaevalli.ch

 T +41 (0) 91 825 21 31

 CH-6500 Bellinzona

 Piazza Collegata 12

 InfoPoint Bellinzona

 Tag us and share your experiences with #bellinzonaevalli

 SOCIAL

 LEGAL

 Data subject to changes. OTR B&T does not assume any responsibility for the data. For further constantly updated information, we kindly ask you to consult our website: bellinzonaevalli.ch

 leventina@bellinzonaevalli.ch

 T +41 (0) 91 869 15 33

 CH-6780 Airolo

 Via della Stazione 22

 InfoPoint Leventina

 InfoPoint Bellinzona & Valli

 blenio@bellinzonaevalli.ch

 T +41 (0) 91 872 14 87

 CH-6718 Olivone

 Via Lavorenno 1

 InfoPoint Valle di Blenio

 T +41 (0) 91 862 33 27

 CH-6710 Biasca

 Via Bellinzona 5

 InfoPoint Biasca e Riviera

 bellinzona@bellinzonaevalli.ch

 T +41 (0) 91 825 21 31

 CH-6500 Bellinzona

 Piazza Collegata 12

 InfoPoint Bellinzona

 Tag us and share your experiences with #bellinzonaevalli

 SOCIAL

 LEGAL

 Data subject to changes. OTR B&T does not assume any responsibility for the data. For further constantly updated information, we kindly ask you to consult our website: bellinzonaevalli.ch

 leventina@bellinzonaevalli.ch

 T +41 (0) 91 869 15 33

 CH-6780 Airolo

 Via della Stazione 22

 InfoPoint Leventina

 InfoPoint Bellinzona & Valli

 blenio@bellinzonaevalli.ch

 T +41 (0) 91 872 14 87

 CH-6718 Olivone

 Via Lavorenno 1

 InfoPoint Valle di Blenio

 T +41 (0) 91 862 33 27

 CH-6710 Biasca

 Via Bellinzona 5

 InfoPoint Biasca e Riviera

 bellinzona@bellinzonaevalli.ch

 T +41 (0) 91 825 21 31

 CH-6500 Bellinzona

 Piazza Collegata 12

 InfoPoint Bellinzona

 Tag us and share your experiences with #bellinzonaevalli

 SOCIAL

 LEGAL

 Data subject to changes. OTR B&T does not assume any responsibility for the data. For further constantly updated information, we kindly ask you to consult our website: bellinzonaevalli.ch

 leventina@bellinzonaevalli.ch

 T +41 (0) 91 869 15 33

 CH-6780 Airolo

 Via della Stazione 22

 InfoPoint Leventina

 InfoPoint Bellinzona & Valli

 blenio@bellinzonaevalli.ch

 T +41 (0) 91 872 14 87

 CH-6718 Olivone

 Via Lavorenno 1

 InfoPoint Valle di Blenio

 T +41 (0) 91 862 33 27

 CH-6710 Biasca

 Via Bellinzona 5

 InfoPoint Biasca e Riviera

 bellinzona@bellinzonaevalli.ch

 T +41 (0) 91 825 21 31

 CH-6500 Bellinzona

 Piazza Collegata 12

 InfoPoint Bellinzona

 Tag us and share your experiences with #bellinzonaevalli

 SOCIAL

 LEGAL

 Data subject to changes. OTR B&T does not assume any responsibility for the data. For further constantly updated information, we kindly ask you to consult our website: bellinzonaevalli.ch

 leventina@bellinzonaevalli.ch

 T +41 (0) 91 869 15 33

 CH-6780 Airolo

 Via della Stazione 22

 InfoPoint Leventina

 InfoPoint Bellinzona & Valli

 blenio@bellinzonaevalli.ch

 T +41 (0) 91 872 14 87

 CH-6718 Olivone

 Via Lavorenno 1

 InfoPoint Valle di Blenio

 T +41 (0) 91 862 33 27

 CH-6710 Biasca

 Via Bellinzona 5

 InfoPoint Biasca e Riviera

 bellinzona@bellinzonaevalli.ch

 T +41 (0) 91 825 21 31

 CH-6500 Bellinzona

 Piazza Collegata 12

 InfoPoint Bellinzona

 Tag us and share your experiences with #bellinzonaevalli

 SOCIAL

 LEGAL

 Data subject to changes. OTR B&T does not assume any responsibility for the data. For further constantly updated information, we kindly ask you to consult our website: bellinzonaevalli.ch

 leventina@bellinzonaevalli.ch

 T +41 (0) 91 869 15 33

 CH-6780 Airolo

 Via della Stazione 22

 InfoPoint Leventina

 InfoPoint Bellinzona & Valli

 blenio@bellinzonaevalli.ch

 T +41 (0) 91 872 14 87

 CH-6718 Olivone

 Via Lavorenno 1

 InfoPoint Valle di Blenio

 T +41 (0) 91 862 33 27

 CH-6710 Biasca

 Via Bellinzona 5

 InfoPoint Biasca e Riviera

 bellinzona@bellinzonaevalli.ch

 T +41 (0) 91 825 21 31

 CH-6500 Bellinzona

 Piazza Collegata 12

 InfoPoint Bellinzona

 Tag us and share your experiences with #bellinzonaevalli

 SOCIAL

 LEGAL

 Data subject to changes. OTR B&T does not assume any responsibility for the data. For further constantly updated information, we kindly ask you to consult our website: bellinzonaevalli.ch

 leventina@bellinzonaevalli.ch

 T +41 (0) 91 869 15 33

 CH-6780 Airolo

 Via della Stazione 22

 InfoPoint Leventina

 InfoPoint Bellinzona & Valli

 blenio@bellinzonaevalli.ch

 T +41 (0) 91 872 14 87

 CH-6718 Olivone

 Via Lavorenno 1

 InfoPoint Valle di Blenio

 T +41 (0) 91 862 33 27

 CH-6710 Biasca

 Via Bellinzona 5

 InfoPoint Biasca e Riviera

 bellinzona@bellinzonaevalli.ch

 T +41 (0) 91 825 21 31

 CH-6500 Bellinzona

 Piazza Collegata 12

 InfoPoint Bellinzona

 Tag us and share your experiences with #bellinzonaevalli

 SOCIAL

 LEGAL

 Data subject to changes. OTR B&T does not assume any responsibility for the data. For further constantly updated information, we kindly ask you to consult our website: bellinzonaevalli.ch

 leventina@bellinzonaevalli.ch

 T +41 (0) 91 869 15 33

 CH-6780 Airolo

 Via della Stazione 22

 InfoPoint Leventina

 InfoPoint Bellinzona & Valli

 blenio@bellinzonaevalli.ch

 T +41 (0) 91 872 14 87

 CH-6718 Olivone

 Via Lavorenno 1

 InfoPoint Valle di Blenio

 T +41 (0) 91 862 33 27

 CH-6710 Biasca

 Via Bellinzona 5

 InfoPoint Biasca e Riviera

 bellinzona@bellinzonaevalli.ch

 T +41 (0) 91 825 21 31

 CH-6500 Bellinzona

 Piazza Collegata 12

 InfoPoint Bellinzona

 Tag us and share your experiences with #bellinzonaevalli

 SOCIAL

 LEGAL

 Data subject to changes. OTR B&T does not assume any responsibility for the data. For further constantly updated information, we kindly ask you to consult our website: bellinzonaevalli.ch

 leventina@bellinzonaevalli.ch

 T +41 (0) 91 869 15 33

 CH-6780 Airolo

 Via della Stazione 22

 InfoPoint Leventina

 InfoPoint Bellinzona & Valli

 blenio@bellinzonaevalli.ch

 T +41 (0) 91 872 14 87

 CH-6718 Olivone

 Via Lavorenno 1

 InfoPoint Valle di Blenio

 T +41 (0) 91 862 33 27

 CH-6710 Biasca

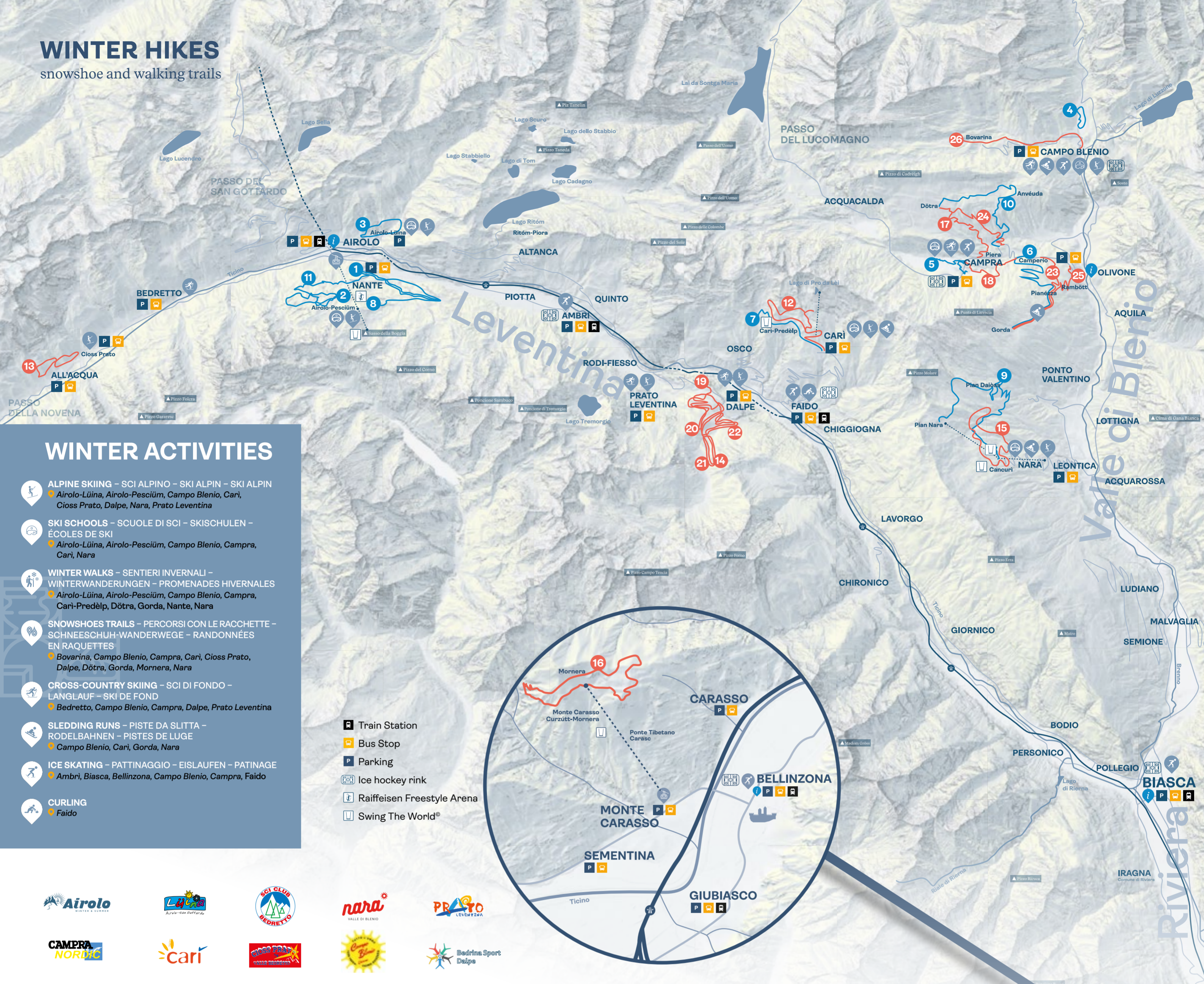
 Via Bellinzona 5

 InfoPoint Biasca e Riviera

 bellinzona@bell

WINTER HIKES

snowshoe and walking trails



WINTER ACTIVITIES

- ALPINE SKIING – SCI ALPINO – SKI ALPIN – SKI ALPIN**
 Airolo-Lüina, Airolo-Pesciüm, Campo Blenio, Cari, Cioss Prato, Dalpe, Nara, Prato Leventina
- SKI SCHOOLS – SCUOLE DI SCI – SKISCHULEN – ÉCOLES DE SKI**
 Airolo-Lüina, Airolo-Pesciüm, Campo Blenio, Campra, Cari, Nara
- WINTER WALKS – SENTIERI INVERNALI – WINTERWANDERUNGEN – PROMENADES HIVERNALES**
 Airolo-Lüina, Airolo-Pesciüm, Campo Blenio, Campra, Cari-Predèlp, Döttra, Gordà, Nante, Nara
- SNOWSHOES TRAILS – PERCORSI CON LE RACCHETTE – SCHNEESCHUH-WANDERWEGE – RANDONNÉES EN RAQUETTES**
 Boverina, Campo Blenio, Campra, Cari, Cioss Prato, Dalpe, Döttra, Gordà, Mornera, Nara
- CROSS-COUNTRY SKIING – SCI DI FONDO – LANGLAUF – SKI DE FOND**
 Bedretto, Campo Blenio, Campra, Dalpe, Prato Leventina
- SLEDDING RUNS – PISTE DA SLITTA – RODELBAHNEN – PISTES DE LUGE**
 Campo Blenio, Cari, Gordà, Nara
- ICE SKATING – PATTINAGGIO – EISLAUFEN – PATINAGE**
 Ambri, Biasca, Bellinzona, Campo Blenio, Campra, Faido
- CURLING**
 Faido

- Train Station
- Bus Stop
- Parking
- Ice hockey rink
- Raiffeisen Freestyle Arena
- Swing The World®



WINTER WALKS

Sentieri invernali battuti – Gespurte Winterwanderwege – Promenades hivernales battues

- | | | | | | |
|---|--|---|--|---|---|
| 1 NANTE-ALPE NUOVA
↔ 6 km
▲ 120 m
⌚ 1h 55
★ Medium
→ Circular
QR: [QR Code]
452 | 3 AIROLO-LÜINA
↔ 4.4 km
▲ 108 m
⌚ 0h 55
★ Easy
→ Linear*
QR: [QR Code]
453 | 5 SENTIERO DI CAMPRA
↔ 5.4 km
▲ 90 m
⌚ 1h 25 min
★ Medium
→ Linear*
QR: [QR Code]
455 | 7 CARI-PREDÈLP
↔ 5.6 km
▲ 105 m
⌚ 1h 55
★ Medium
→ Linear*
QR: [QR Code]
458 | 9 PIAN NARA-CANCORI
↔ 19.1 km
▲ 930 m
⌚ 7h 15
★ Difficult
→ Circular
QR: [QR Code] | 11 NANTE-PESCIÜM
↔ 8.3 km
▲ 401 m
⌚ 3h 10
★ Medium
→ Linear*
QR: [QR Code] |
| 2 AIROLO-PESCIÜM
↔ 2.8 km
▲ 68 m
⌚ 0h 50
★ Easy
→ Circular
QR: [QR Code]
453 | 4 CAMPO BLENIO
↔ 2 km
▲ 30 m
⌚ 0h 40
★ Easy
→ Circular
QR: [QR Code]
454 | 6 CAMPERIO-GORDA
↔ 13 km
▲ 660 m
⌚ 5h
★ Difficult
→ Linear*
QR: [QR Code]
457 | 8 NANTE-RAVINA
↔ 9.5 km
▲ 348 m
⌚ 3h 30
★ Medium
→ Circular
QR: [QR Code] | 10 STRADUNÈT PIERA-DÖTRA
↔ 11.7 km
▲ 517 m
⌚ 4h 15
★ Difficult
→ Linear*
QR: [QR Code] | |

SNOWSHOE TRAILS

Percorsi con le racchette – Schneeschuh-Wanderwege – Randonnées en raquettes

- | | | | | |
|---|---|--|--|---|
| 12 CARI
↔ 7 km
▲ 460 m
⌚ 3h 45
★ Difficult
→ Circular
QR: [QR Code]
955 | 15 NARA-CANCORI
↔ 5 km
▲ 240 m
⌚ 2h 25
★ Medium
→ Circular
QR: [QR Code]
960 | 18 CAMPRA-CAMPERIO
↔ 4.6 km
▲ 267 m
⌚ 2h 20
★ Medium
→ Linear*
QR: [QR Code] | 21 DALPE-LA MARMOTTA
↔ 2.4 km
▲ 55 m
⌚ 1h
★ Easy
→ Circular
QR: [QR Code] | 24 PIERA-DÖTRA
↔ 5.9 km
▲ 453 m
⌚ 3h 20
★ Difficult
→ Linear*
QR: [QR Code] |
| 13 CIOSS PRATO
↔ 4.1 km
▲ 156 m
⌚ 1h 40
★ Easy
→ Circular
QR: [QR Code]
956 | 16 MORNERA
↔ 4.7 km
▲ 260 m
⌚ 2h 20
★ Medium
→ Circular
QR: [QR Code]
966 | 19 DALPE-IL RICCIO
↔ 3.2 km
▲ 120 m
⌚ 1h 05
★ Easy
→ Linear*
QR: [QR Code] | 22 DALPE-IL LUPO
↔ 3.1 km
▲ 185 m
⌚ 1h 35
★ Easy
→ Circular
QR: [QR Code] | 25 PIANEZZA-GORDA
↔ 12 km
▲ 722 m
⌚ 6h
★ Difficult
→ Linear*
QR: [QR Code] |
| 14 DALPE
↔ 8.4 km
▲ 267 m
⌚ 3h 20
★ Medium
→ Circular
QR: [QR Code]
957 | 17 CAMPRA-DÖTRA
↔ 5.5 km
▲ 380 m
⌚ 2h 55
★ Medium
→ Linear*
QR: [QR Code]
961 | 20 DALPE-LO SCOIATTOLO
↔ 4 km
▲ 179 m
⌚ 1h 50
★ Easy
→ Circular
QR: [QR Code] | 23 RAMBÖTT-GORDA
↔ 9.8 km
▲ 674 m
⌚ 5h 20
★ Difficult
→ Linear*
QR: [QR Code] | 26 CAMPO BLENIO-BOVARINA
↔ 11.1 km
▲ 712 m
⌚ 5h 50
★ Difficult
→ Linear*
QR: [QR Code] |

- EN** For safety reasons, it is forbidden to leave the marked route
 * The "Linear" route data are to be taken as outward and return trip on the same route.
- IT** Per questioni di sicurezza è vietato uscire dal percorso segnalato
 * I dati relativi a questo percorso "Linear" sono da intendersi andata e ritorno sulla stessa tratta.
- DE** Aus Sicherheitsgründen ist es verboten, die markierte Route zu verlassen
 * Die Angaben zu dieser "Linear" Route sind als Hin- und Rückweg auf der gleichen Strecke zu verstehen.
- FR** Pour des raisons de sécurité, il est interdit de quitter l'itinéraire signalé
 * Les données relatives à cet itinéraire "Linear" doivent être comprises comme des trajets aller et retour sur la même route.

Grafica: Lucasdesign.ch

Stampa: Salvioni arti grafiche, Bellinzona

©copyright map.geo.admin.ch